

Hospital Discharge Task and Finish Group

Appendix 2

BACKGROUND DATA TO HOSPITAL DISCHARGES

PART 2 –
FAILED DISCHARGES

PART 3 –
DELAYED TRANSFER OF CARE

A greener place Man gwyrdach



Hospital Discharge Task and Finish Group

PART 1

Background Data

The Caerphilly picture for hospital discharges:

- Which NHS hospitals do Caerphilly residents get discharged from?
- How many people are discharged from ABUHB hospitals?
- What responses do hospital discharge requests require?
- What support did people need on discharge?

A greener place Man gwyrdach



Time frame and sources of data

Times frame:

6 month period – 1st January 2015 – 30th June 2015

Sources:

Aneurin Bevan University Health Board

CCBC Social Services

Frailty portal

Patient type:

18+ resident of Caerphilly

physical health admission reason not mental health

A greener place Man gwyrdach



Hospital Discharge Task and Finish Group

Which NHS hospitals do Caerphilly residents get discharged from?

- Royal Gwent Hospital
- YYF
- St Wooles
- Neville Hall Hospital
- Prince Charles Hospital
- Royal Glamorgan Hospital
- Llandough
- Rookwood
- Velindra
- UHW
- Princess of Wales
- Morriston

A greener place Man gwyrddach



Hospital Discharge Task and Finish Group

How many people are discharged from ABUHB hospitals?

- Elective 1214
- Emergency 4400
- Obstetrics 1027
- Transferred to hospitals outside Gwent 245

Total – 6886*

*Please note that this does not include day cases, patients assessed out from assessment units or patients discharged from mental health units

A greener place Man gwyrdach



Hospital Discharge Task and Finish Group

What responses do hospital discharge requests require?

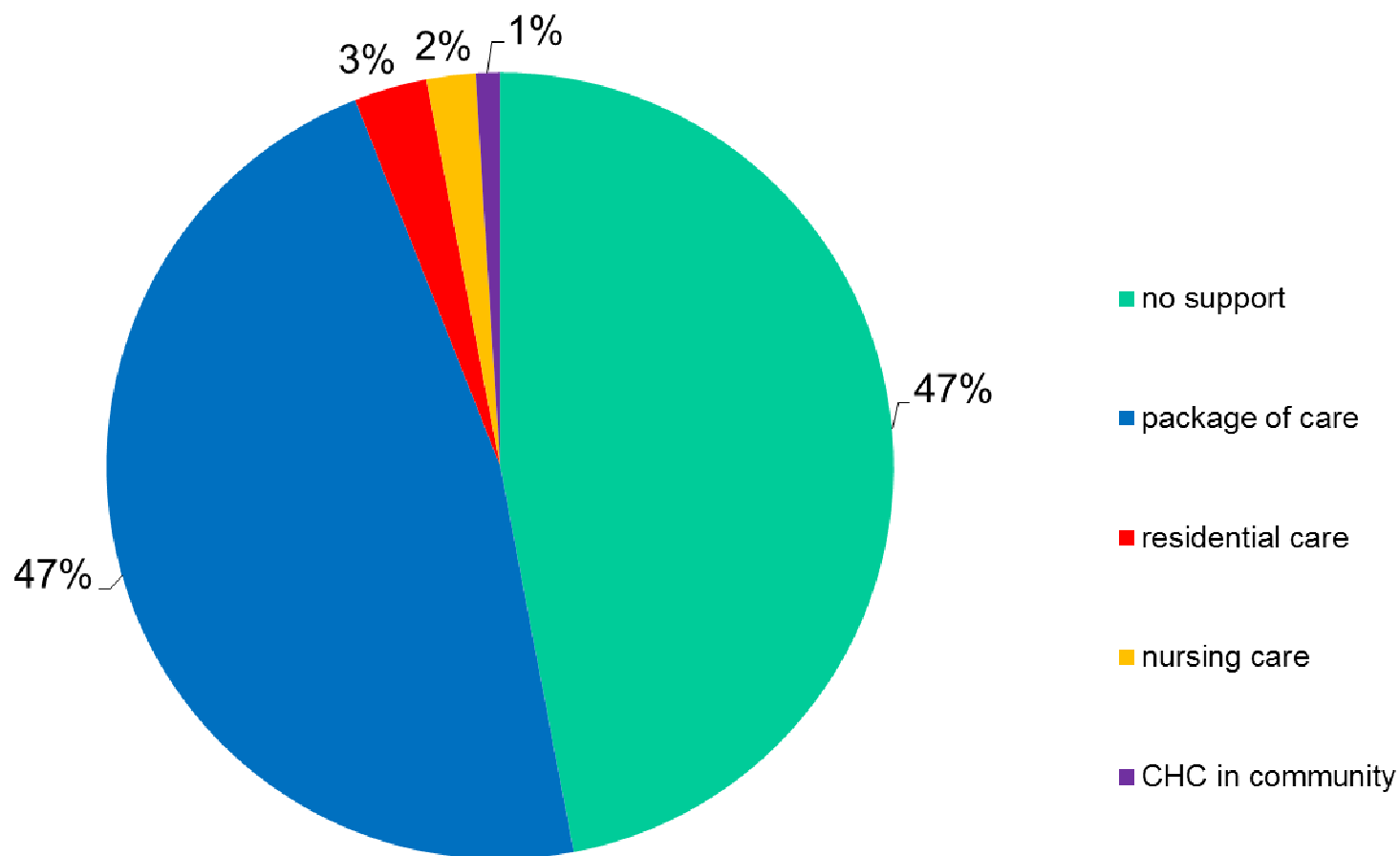
- Request for restart of same care provision:
 - 104 requests for 81 people
 - 19 people had care restarted 2 or more times.
- Hospital discharge where circumstances meant assessment required to support discharge:
 - 269 assessments

That means out of a potential 5614 discharges, only 373 were referred to social services for support with discharge from hospital.

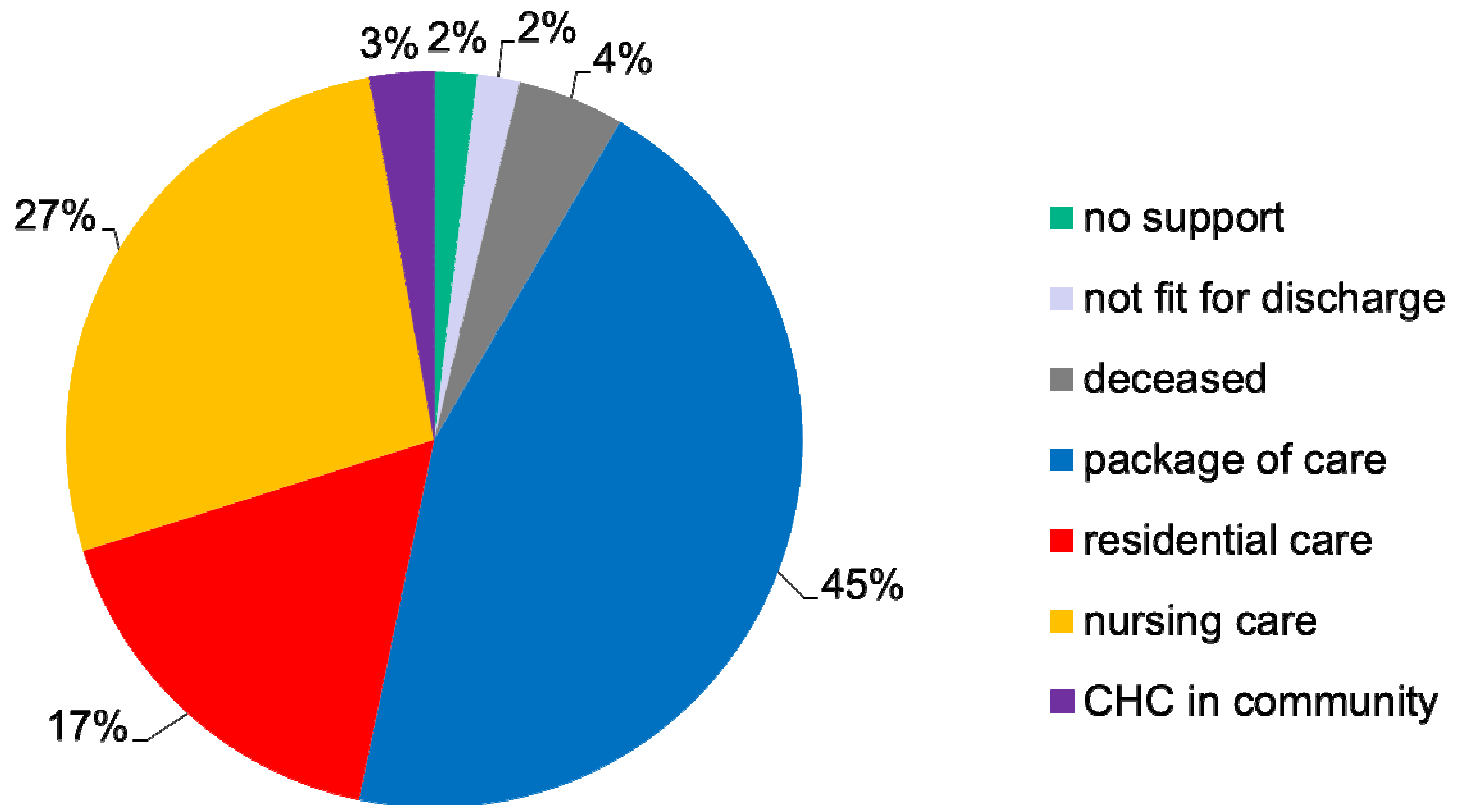
Assessments Completed in the period 01/01/2015 to 30/06/2015

| Assessment Type | Count of Assessments |
|--|----------------------|
| AS - OT Contact / Overview | 556 |
| AS- Specialist OT | 491 |
| AS- Specialist Reablement Assessment | 287 |
| AS-Hospital Discharge Assessment | 269 |
| UAP Assessment | 347 |
| AS Specialist SW Continuing Care Assessment | 144 |
| AS- Specialist Moving & Handling Assessment | 82 |
| UAP Contact Assessment | 64 |
| AS - Specialist Visual Impairment Assessment | 38 |
| Total Number Of Assessments | 2278 |

- What support did people need prior to admission?

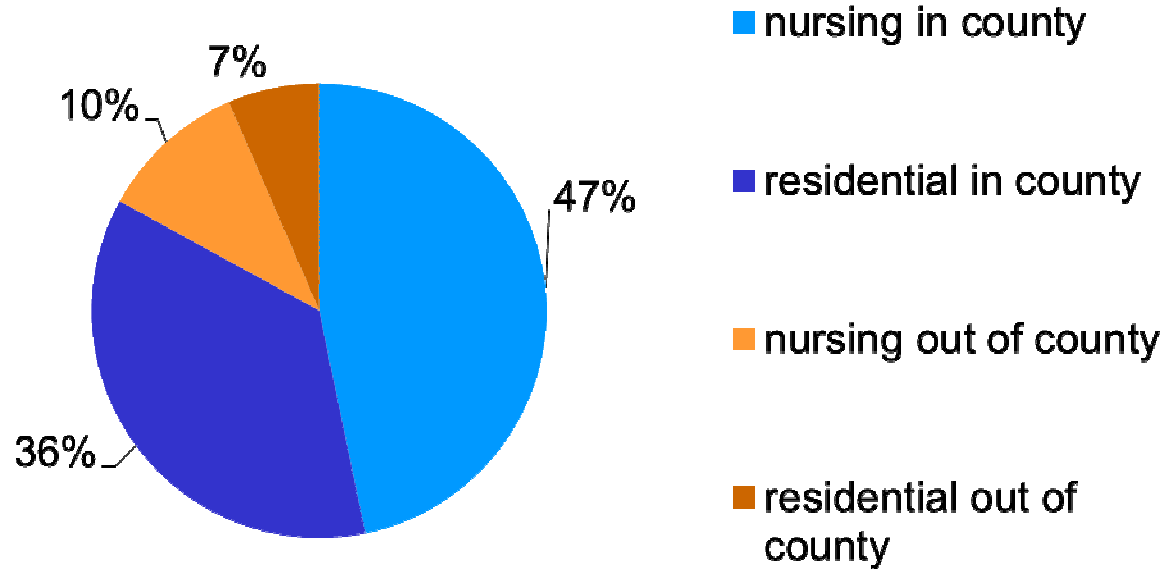


- What support did people need on discharge?



Placements

placement location



A greener place Man gwyrdach

| BOROUGH | VACANCIES AS OF 18 TH SEPTEMBER 2015 | | | | |
|-----------------------------|---|---------|---------|-------------|-------------------|
| | RESIDENTIAL | NURSING | EMI RES | EMI NURSING | TOTAL PER BOROUGH |
| CAERPHILLY | 33 | 19 | 22 | 7 | 81 |
| TORFAEN | 39 | 7 | 12 | 6 | 64 |
| NEWPORT | 29 | 19 | 1 | 0 | 49 |
| BLAENAU GWENT | 9 | 20 | 4 | 9 | 42 |
| MONMOUTHSHIRE | 10 | 13 | 6 | 13 | 42 |
| TOTALS BY TYPE OF PLACEMENT | 120 | 78 | 46 | 7 | |

A greener place Man gwyrddach



Hospital Discharge Task and Finish Group

PART 2

Failed discharge notifications

There are 23 failed discharges to date this year. Approx. 50% are related to discharge without adequate care support.

| RGH | | PCH | | NHH | | UHW | | YYF | |
|-------|---|---------|---|-----|---|-----|---|---------|---|
| A & E | 2 | Ward 12 | 2 | 3/3 | 1 | A1 | 1 | MAU | 3 |
| C6E | 1 | Ward 11 | 2 | | | | | OAKDALE | 2 |
| B6 | 1 | Ward 9 | 1 | | | | | UNK | 1 |
| Eyes | 1 | CDU | 1 | | | | | | |
| D3E | 1 | MAU | 1 | | | | | | |

Other reasons for failed discharge notifications

- Dignity
- Discharge instructions omitted
- Medically unwell
- Equipment missing
- CHC paperwork not available
- Palliative care support not in place
- Reablement team not informed

A greener place Man gwyrdach



Under reporting of issues linked to discharge

It is recognised that there is under reporting on issues.

What are we doing?

A greener place Man gwyrddach



Hospital Discharge Task and Finish Group

PART 3

Delayed Transfer of Care (DToC)

What is delayed transfer of care and how is it measured?

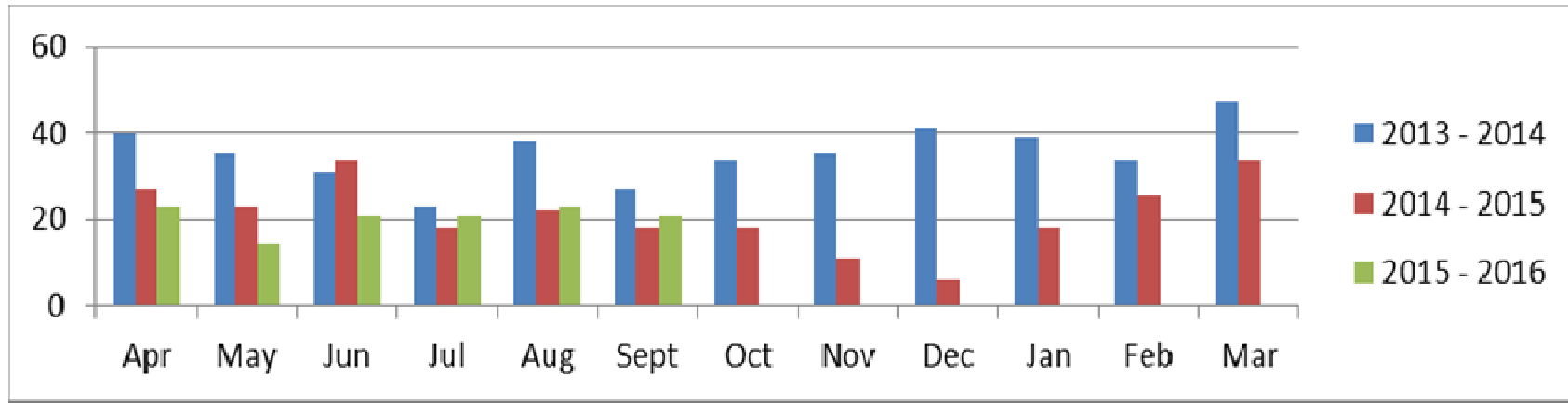
How are Caerphilly doing with DToC?

A greener place Man gwyrddach

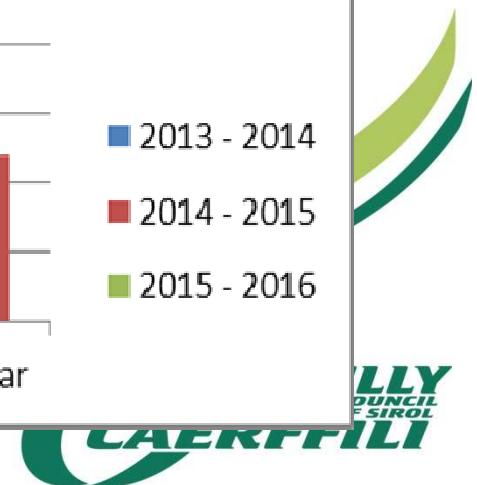
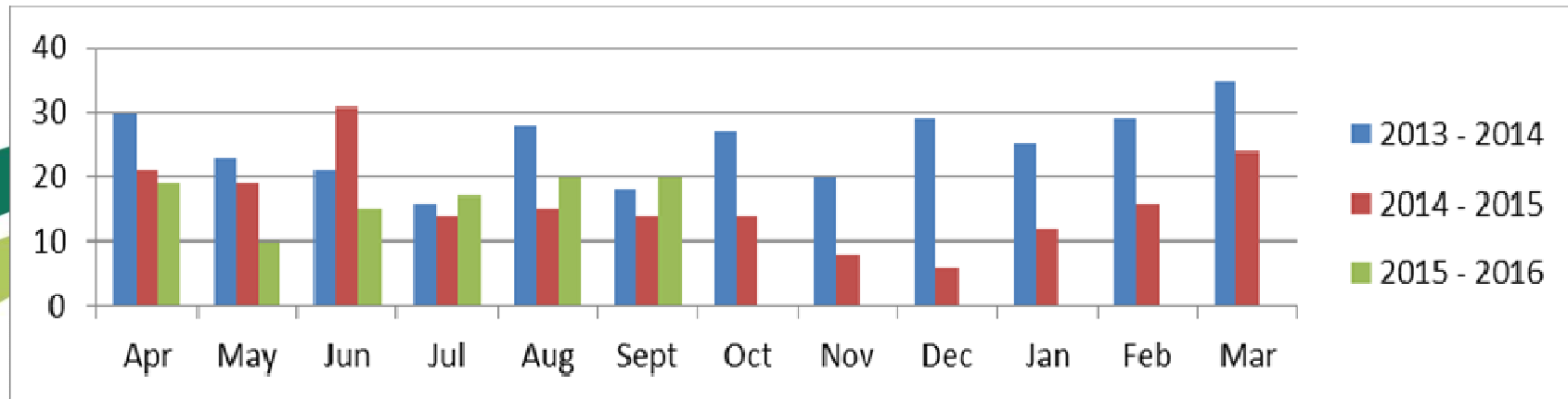


Contrast table for the past 3 years

Improvement and maintenance of lower DToC for the LA



ABuHB shows improvement, however sustainability of reduction year on year is not evident



Current health position

- Most recent data suggests that ABuHB are reporting DToC figures under the national Welsh LHB average.
- The joint validation process is currently undergoing redesign to improve engagement.
- Senior health managers are currently being tasked with improving internal monitoring and reporting systems for ABuHB hospitals
- Health Senior managers are challenging the agreed national coding system.

A greener place Man gwyrdach



National picture

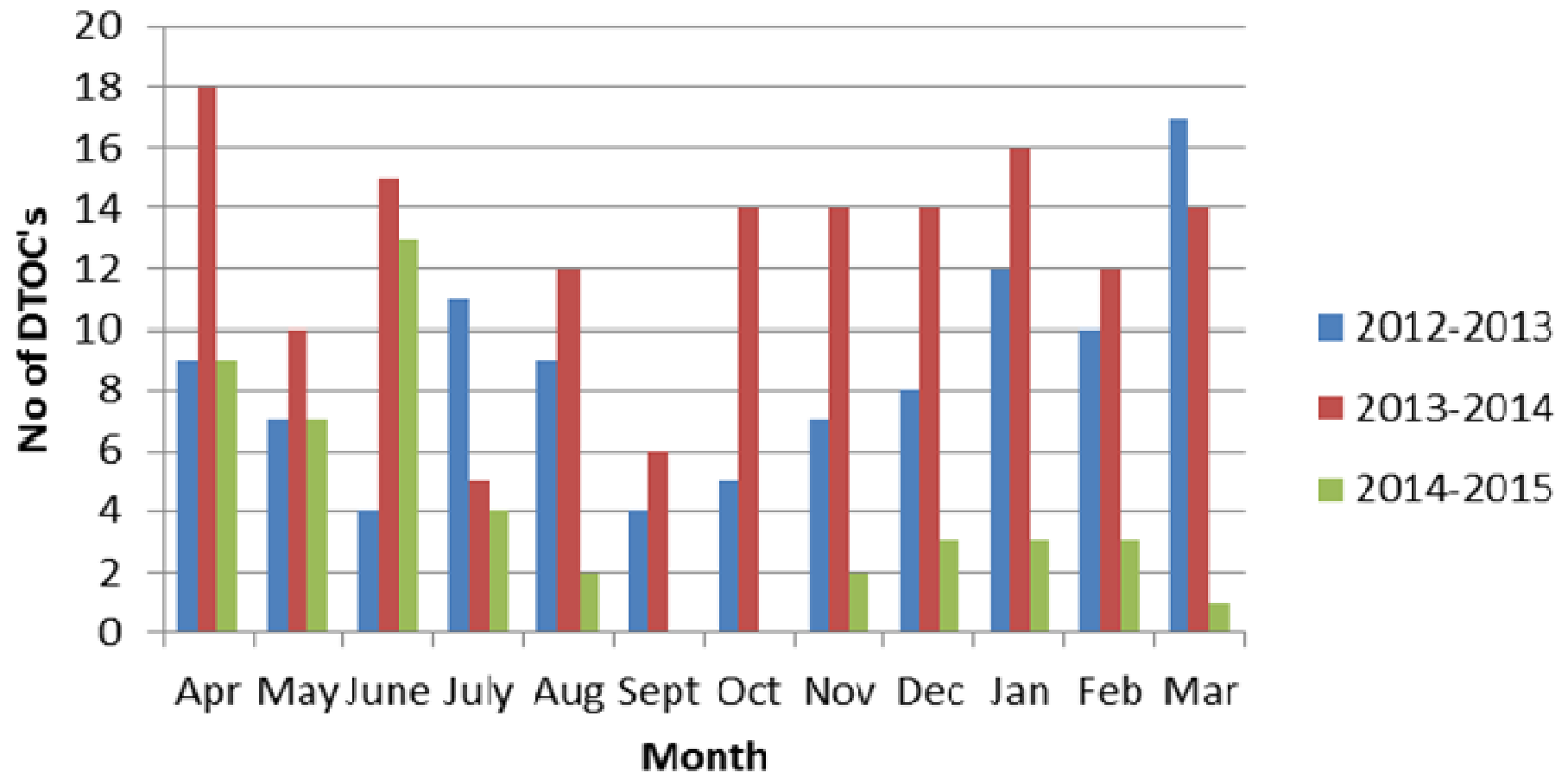
- Between 450 -500 DToCs per month (Approx. 1% of available beds nationally).
- Close scrutiny by health minister and deputy health minister on a monthly basis.
- Commissioned all Wales piece of work to identify DToC monitoring systems “fitness of purpose”
- Collective perception that transparency of monitoring is not uniform across LHBs/Las
- Are we measuring the right things and is there a better way to achieve appropriate LOS in hospitals
- Accommodation choice policy doesn't consider delays attributable to care home top up fees.

A greener place Man gwyrdach



Caerphilly DToC social service reasons

No of DToC for Social Care reasons



Key themes for Caerphilly DToC

- CHC process delays
- Homes of choice
- Care package availability

A greener place Man gwyrddach





Questions?



A greener place

Man gwyrddach

